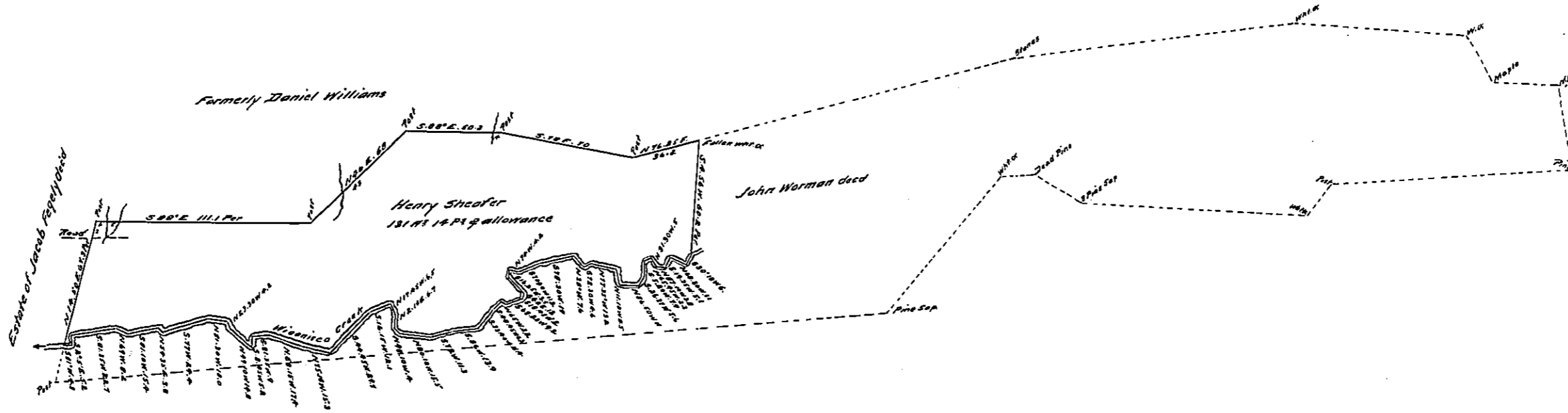


(Endorsement on back)  
 Draught  
 Dauphin County  
 William Power  
 Henry Sheaffer  
 131 1/4 P<sup>cs</sup>  
 6 Allowance  
 Recd. 26<sup>th</sup> Nov 1850  
 in al  
 Accepted 24 Nov 1850  
 W<sup>o</sup> Sec. Lancaster  
 See Map



Resurveyed for Henry Sheaffer Sept 20th 1850, Situate in Wiconisco Township, Dauphin County Penn<sup>a</sup> Containing 131 1/4 perches and allowance of six per cent. Being part of a warrant granted to William Power, dated the 14th day of July 1774. Surveyed by W.S. Sheaffer for Daniel Hoffman  
 I approve of the above Survey  
 Daniel Hoffman C.S.

To John Rowe Esq.  
 Surveyor General, Pennsylvania

In Testimony, That the above is a copy of the original remaining on file in the Department of Internal Affairs of Pennsylvania, made conformably to an Act of Assembly approved the 16th day of February, 1833, I have hereunto set my Hand and caused the Seal of the said Department to be affixed, at Harrisburg, the sixth day of July A.D. 1911  
 Henry Howell,  
 Secretary of Internal Affairs.